

HC-RS485 收发器说明书

HC-RS485 TRANSCEIVER Instructions

- 1、 485 收发器可将普通 TTL 信号转换成 RS485 信号进行传输，提高线路输出功率，通讯距离实测 200 米。

The HC-RS485 TRANSCEIVER can be change the general TTL signal to RS485 signal, increase line output power and Communication distance measured 200 meters.

- 2、 RS485 端口具有防静电、抗雷击设计。
RS485 port with anti-static, anti-lightning design
- 3、 各端口相互隔离，可降线路的干扰，适合远程数据通讯或干扰大的环境中。

Each port is isolated from each other, which can reduce the interference of the line, suitable for long-distance data communication or in the environment with large interference.

- 4、 RS485 通讯规范要求采用双绞线连接，如果采用平行线通讯距离将大大缩短。

The RS485 communication specification requires the use of twisted pair connection, if the parallel line is used, the communication distance will be greatly shortened

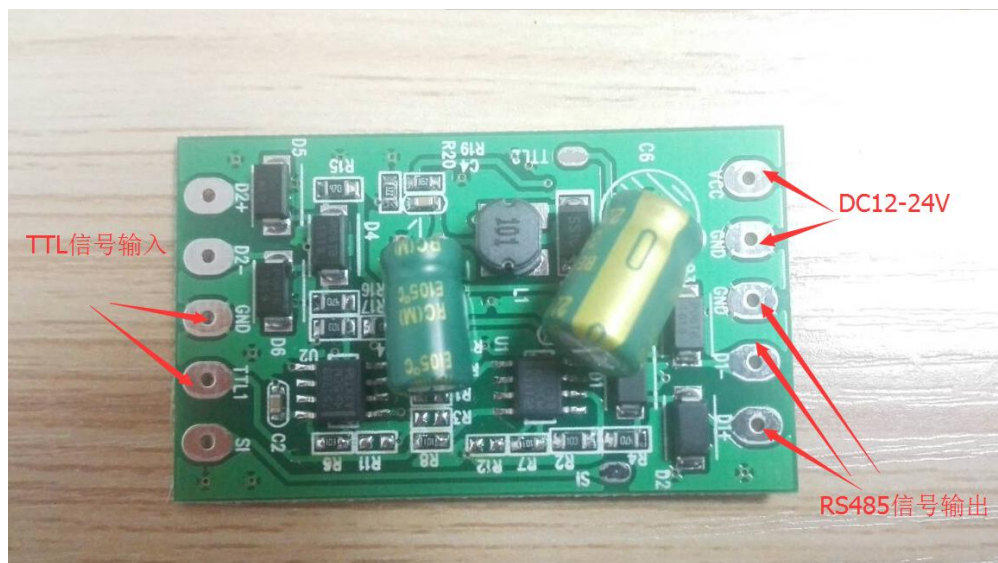
信号收发器工作原理 The signal transceiver working principle
信号发送器将 TTL 信号转换成 RS485 信号，接收器将 RS485 信号转换成 TTL 信号，通过将 TTL 信号转换成 RS485 信号后，利用 RS485 信号的长距离传输特性，实现 TTL 信号的长距离通信。

The signal transceiver can be change the TTL signal to RS485 signal, the receiver can be change RS485 signal to TTL signal, After converting TTL signal to RS485 signal, Using the long-distance transmission characteristics of RS485 signal, accomplish long-distance communication of TTL signal.

应用：单线 LED 驱动 IC 远距离线路连接。

Application: Single-wire LED driver IC Long-distance line connection

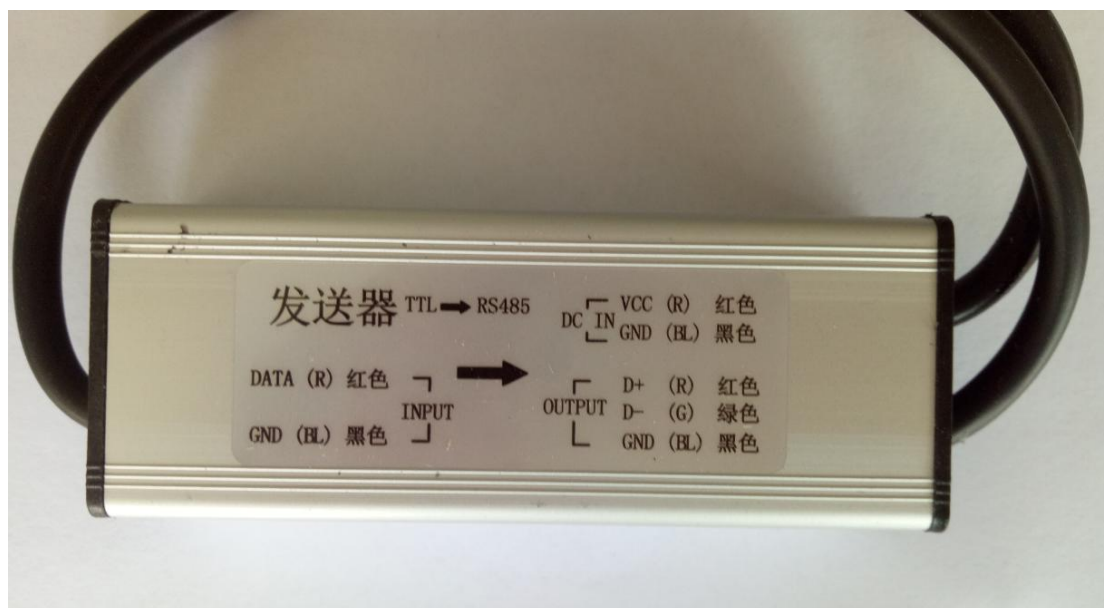
HC-RS485 发送器 HC-RS485 Transmitter



HC-RS485 接收器 HC-RS485 receiver



灌胶成品： finished product



DMX512 信号放大器
DMX512 SIGNAL AMPLIFIER

