

RL-30mm-ICRGB

Specifications

Picture	Dimension	Parameters	
		Input voltage	DC 12V
		Lamp power	0.96W
		Chip	UCS 2904
		LED chip	5050 RGBW
		LEDs number	3
		Color	RGB+white programmable
		IP rating	IP65
		Beam angle	≥140°
		Lifespan	≥50000h

Features

Product Number	RL-30mm-ICRGBW
Light Source	SMD 5050 RGBW LED chip
Beam Angle	140
LED Quantity	3leds/pcs
Operating Voltage	DC12V
Power (W/PCS)	0.96W
IC	UCS2904(same work as TM1814,ws2811,sk6812,sm16703,ect)
Cover Color	Clear lens cover
Diameter (mm)	30mm
Operation Temperature	-30℃-50℃
Waterproof	IP65
Plug	each light has individual waterproof female & male plug

Advantges

- 1-This is RGBW addressable LED lamp.
- 2-Each point included 3 pcs of epistar SMD 5050 RGBW (WW) chip. white color optional (3000k 4000k 6000k optional)
- 3-The Micro driver also has 4 channel SPI signal, ucs2904 IC chipset, same work as TM1814, ect
- 4-Each pixel lamp has a pair of waterproof connector it makes the installation
- 5-18 AWG wire seems too large for such small pixel but it makes the lamp last longer distance without power drop
- 6-30mm diameter LED Pixel ball housing by a clear lens cover, fiber PCB:

Applications



1. Amusement Park Rides Light

Ferris wheel, Carousels, Pirate ship, Pendulum, Bumper car, Tower and so on.

2. Advertisement Outdoor Signboard Backlight

Logo, Signage, Channel letter, Signs, Exposed luminous characters, Billboard and so on.

3. Stage Decoration Light

KTV, Disco, Bar, Night club and other stage light.

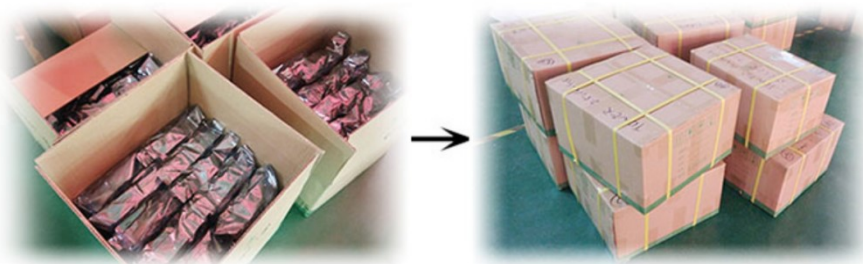
4. Commercial Light

Hotel, Shopping mall, Theater, Square and so on.

5. Kids Rides Decoration

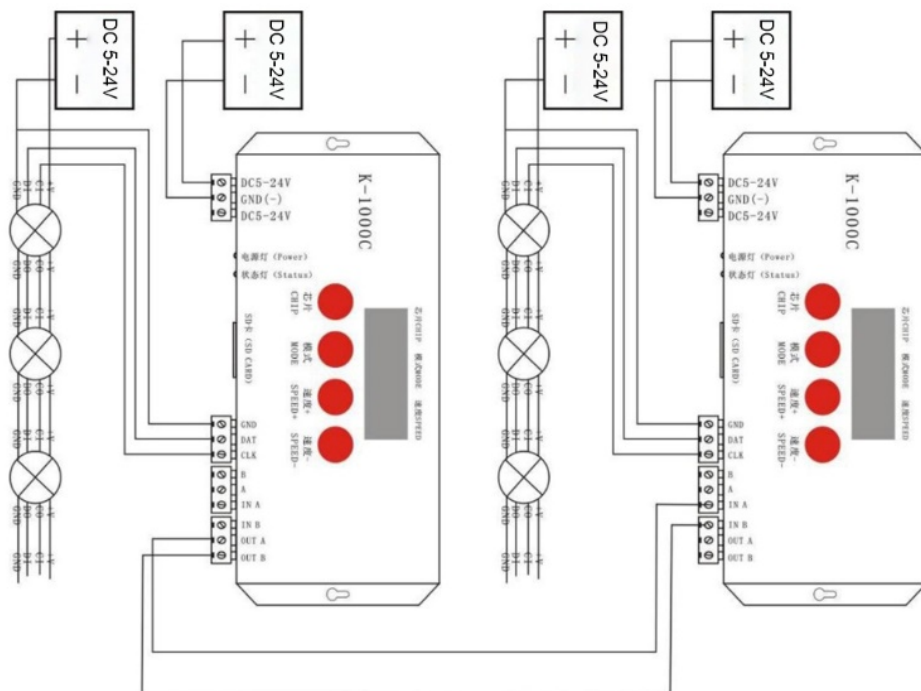
Castles, Robot, Mini carousels, Car, Mini train etc.

Packing & Weight



Weight/100pcs	Pieces/bag	Pieces/carton	G.W/carton	Carton size
2.1kg	100pcs	900pcs	19kg	48cm*48cm*28cm

Connection



Notes:

1. Male connector (with pins) is signal input port, female connector (without pins) is signal output port.
2. We suggest that every 20pcs lights connect to the power supply in parallel to avoid voltage decline.
3. One controller can only support up to 2000 pixels, more than 2000 pixels, you need to cascade with multiple controllers.